

East Meets West AT THE MEADOW



A handcrafted log home in New Mexico reflects its owners' roots in North Carolina and their love of all things wood.

BY MIKE HASKEW  PHOTOGRAPHY BY HEIDI LONG

IT BEGAN WITH A PASSING CONVERSATION, AND THE RESULT WAS SPECTACULAR. Charlene and Jay Wyatt have deep roots in North Carolina, but a magnificent log home, The Meadow, in the tiny town of Cloudcroft, New Mexico, has a special place in their hearts.

"The Meadow is our respite," explains Charlene. "It's our surrendering place. We liken our home in Cloudcroft to a favorite pair of boots that you reach for naturally. They pull on easy, and the comfort always has you going back to them again and again."

AS DUSK SETTLES IN THE MOUNTAINS OF NEW MEXICO, THE MEADOW SHIMMERS LIKE A DIAMOND AGAINST THE VERDANT LANDSCAPE OF LUSH GRASS AND TALL TREES.



LEFT: A CUSTOM LEAF PATTERN BEAUTIFULLY ACCENTUATES THE JUNCTION OF TILE AND TEAKWOOD FLOORING IN AN ELEGANT FORM THAT COMPLEMENTS THE RUSTIC CHARM OF THE MEADOW. RIGHT: WIDE WINDOWS AND THE GLASS PANES OF FRENCH DOORS ALLOW NATURAL LIGHT TO ILLUMINATE THE DINING AREA OF THE MEADOW. THE JACK DANIELS DISTILLERY BARREL, CARRIED WEST FROM LYNCHBURG, TENNESSEE, ADDS AN ELEMENT OF WHIMSY. BELOW: FLAMES LEAP FROM THE DEEP STONE FIRE PIT, AND A PAIR OF ADIRONDACK CHAIRS COMPLEMENT THE DISPLAY OF EXTERIOR STONE ARTISTRY THAT IS APPARENT AT THE MEADOW.



DESIGN tip
 "A SIMPLE DESIGN ALLOWS THE LOG WORK TO STEAL THE SHOW, SO TO SPEAK."
 - ROBERT LOCKERBY,
 SUMMIT LOG AND TIMBER HOMES

The Meadow is a 3,100-square-foot piece of heaven on 10 acres snug against the side of a mountain in the Sacramento Range at a 9,400-foot elevation. Two hours north of El Paso, Texas, The Meadow and Cloudcroft are miles away from the bustle of everyday living. Charlene and Jay are firm believers that people cross one another's paths for a reason. The people and the process involved made the creation of The Meadow a joy.

"We had an excellent realtor with Ken Watters of Gary Mack Real Estate," remembers Charlene. "Ken was the salt of the earth. We spent a great deal of time with him, and through him we found the perfect builder, Wes Housler of Housler Construction. Wes took us to our first Summit Log and Timber Home, and we were immediately in awe of the quality and

craftsmanship of their product. With Summit chosen, we began a relationship with the company owner, Robert Lockerby. Robert was patient and understanding with our thoughts and goals."

Originally, the Wyatts chose a stock floorplan that was reversed to accommodate the desired building location. Lockerby listened and customized the layout, not only matching but also exceeding the vision of the homeowners, who delighted in seeing their ideas become reality.

The finished product encompasses a main floor with master bedroom and bath on one side with French doors leading to a wraparound deck. The great room includes a foyer with a large living area, ample seating centered on a stunning stone fireplace, and deck access through French doors. On



I LOVE MY LOG HOME BECAUSE ...

"I love my log home because of the raw and natural materials. There is an element to our Summit log home specifically that is very grounding, if you will. You look at the log in the natural state that it is used to create our home and know that this is exactly what it looked like standing upright and planted firmly in the ground ... I remember that when I was a little girl my dad always loved log homes. On family road trips, we were always picking them out and looking at different types of logs and how they were milled and treated. I think that fascination just grew with me, and coupled with Jay's love of all wood and woodworking, it was a natural choice."

- Charlene Wyatt

I WANTED TO LIVE IN A LOG HOME BECAUSE ...

"I wanted to live in our log home because it is just so different from flat walls of sheetrock. The three-dimensional look is very interesting to the eye and is very comfortable. My favorite room is the den with its tall A-frame structure and the elk shed-antler chandelier along with the rustic ones as well. With a roaring fire, it is great."

- Jay Wyatt

the other side of the main floor, the full dining room is complemented by an expansive kitchen with a walk-in pantry and, once again, deck access through a third set of matching French doors.

The lower level is completely finished with bedrooms on either side, a full bath, a small workshop, and a spacious laundry/utility room just off the large family room, which is perfect for movie nights or quality time at the game table. The fire pit is a favorite outdoor gathering place, while the lovely mountain meadow is just steps away. Large windows on both levels offer views of the meadow from several directions. A two-car garage is detached.

"I think the overall look of the home, with its clean lines, really accents the irregularities and natural contours of the logs," observes Lockerby. "We used western red cedar logs with flared bottom ends, which

give the home a very robust log appearance. The corners are what we call staggered ends, where the flare extends past the log below it, allowing the flare to be more visible so you can see the natural beauty of the log itself. The design itself was fairly simple, and the log work was straightforward."

Jay observes, "The most striking features are the logs themselves and the craftsmanship that went into the joinery of the logs. It is more like a work of art." He also appreciates Charlene's talent for decorating.

"I actually did not use an interior designer or a decorator," she relates. "I was born in Texas. Although only there two years, I can tell you that I have always been pulled in that direction. I believe our home reflects our true character. The Meadow, to us, is the perfect blend of western mountains and a southwestern feel."



East actually does meet West in the décor of The Meadow. Pulling a trailer on their way from North Carolina, the Wyatts passed a roadside store in Clive, Texas, and made a U-turn. Beds, nightstands, and miscellaneous tables came from there. Cabinets for the kitchen and bathrooms were custom made in Fayetteville, North Carolina, by C&S Cabinets. When they were ready for hanging, the Wyatts rented a U-Haul and drove them to New Mexico, the Land of Enchantment. The large entrance gate and signage that displays "The Meadow" were fabricated by McCune Technology of Fayetteville. Passing through Lynchburg, Tennessee, the Wyatts picked up a whiskey barrel from the famed Jack Daniel's distillery as an accent piece.

A large cypress stump serves as the base for the wash basin in the guest bathroom, and Wes Housler produced a true marvel. Jay is a fan of the Discovery Channel television series *Swamp Loggers*. An avid pilot, he has flown many

times over the area of North Carolina where the Goodson family lives.

"The building of our home coincided with a season of the show, and I made a comment, 'Wouldn't it be great if we could take a cypress from North Carolina out to New Mexico and somehow use it in the new house?'" Charlene says. "Two days later, Jay had met with Bobby Goodson and his employees, and they were looking for a stump with a lot of bottom root character for our home in Cloudcroft. We trucked it out."

The Wyatts love the character that the blend of stone and massive beams brings to The Meadow, and the teak Tobacco Road floors are a favorite. The massive wooden front door is custom designed with a speakeasy inset.

Harmonious lighting features a single custom chandelier of elk antler made by an El Paso artist and an ensemble brought together by Ashley Butler Blue of North Carolina-based Butler Lighting. Multi-

DESIGN tip

"WITH LOG HOMES, THE INTERIOR WALLS THEMSELVES DON'T REQUIRE ADDITIONAL FINISHING MATERIALS. THIS, IN TURN, CUTS DOWN ON CHEMICALS OR MATERIALS THAT USE CHEMICALS IN THEIR PROCESSING, WHICH MAKES FOR A SAFER HOME AND ENVIRONMENT."

- ROBERT LOCKERBY, SUMMIT LOG AND TIMBER HOMES

ABOVE: THE MASTER BEDROOM DECOR EMBRACES THE MEADOW'S SOUTHWESTERN LOCATION. THE FRENCH DOORS TO THE DECK BRING IN PLENTY OF NATURAL LIGHT AND A STUNNING VIEW. **CENTER TOP:** AN IMMENSE CYPRESS STUMP SERVES AS THE BASE FOR A WASH BASIN IN A GUEST BEDROOM OF THE MEADOW. **CENTER BOTTOM:** A MODERN VERSION OF A CLASSIC CLAWFOOT TUB GRACES A CORNER OF A GUEST BATHROOM. **OPPOSITE:** ONE OF SEVERAL HANDCRAFTED BEDS THE WYATTS HAULED FROM TEXAS TO THEIR HOME IN CLOUDCROFT, NEW MEXICO, EXUDES RUSTIC CHARM.



ABOVE: THE AVERAGE DIAMETER OF THE HOME'S WESTERN RED CEDAR LOGS IS 16 INCHES, AS EVIDENCED BY THE STACK NEAR THE GREAT ROOM FIREPLACE. THE SMALLER STONES OF THE FLOOR-TO-CEILING FIREPLACE ALLOW THE LOGS TO TAKE CENTER STAGE.

RIGHT: A SADDLE USED BY JAY WYATT WHEN HE WAS A CHILD HIGHLIGHTS ONE OF THE MASSIVE WOODEN BEAMS IN THE GREAT ROOM OF THE MEADOW. THE SADDLE IS A FAVORITE DECORATIVE ELEMENT OF HIS WIFE, CHARLENE.

OPPOSITE TOP: THE WRAPAROUND PORCH OF THE MEADOW SNEAKS AROUND A STAGGERED END OF THE LOG HOME'S EXTERIOR. AN INVITING PLACE TO RELAX AND ENJOY THE MAGNIFICENT VIEWS, THE PORCH IS A FAVORITE FEATURE OF THE WYATT FAMILY AND VISITORS ALIKE.

tiered chandeliers from Savoy House hang in the great room, while the kitchen pendants are blown glass from Elk Lighting, the dining room candle chandelier is from Kichler Lighting, and all outdoor lighting is by Minka Lavery.

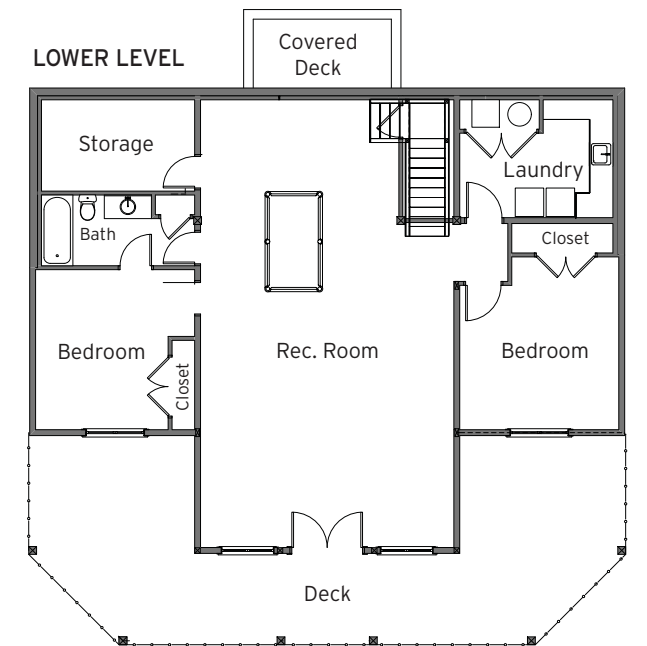
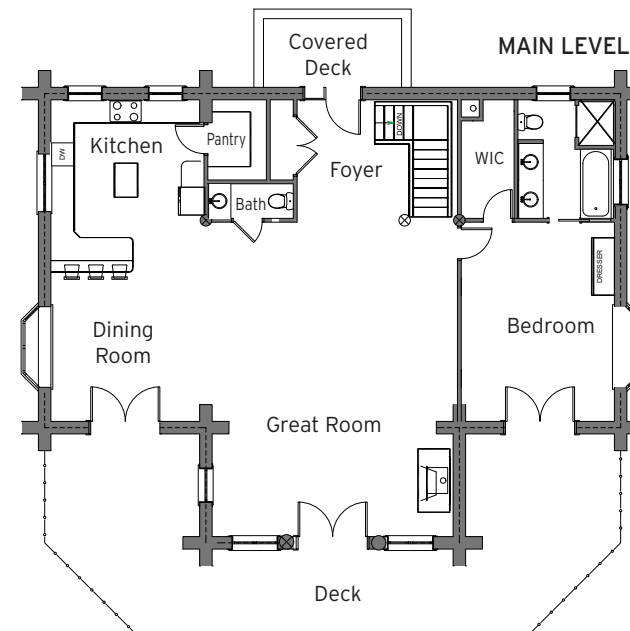
In the kitchen, a large copper farm sink and matching hood are focal points, while a gas cooktop and stainless appliances are convenient, and granite countertops with a bar that accommodates quick meals or snacks add ambience.

"From the beginning, we knew that we wanted a log home—a real honest to goodness log home," Charlene reflects. "We have built buildings, and we have built houses, but this is different. Log homes are beautiful. They are majestic."

In the making of The Meadow, Jay and Charlene Wyatt have found the western sanctuary that they sought. Throughout the journey, they have cultivated lasting relationships, enriching the lives of others just as theirs has been enriched. 🌲

Log Producer: Summit Log and Timber Homes, Boise, Idaho
Log Builder: Housler Construction, Cloudcroft, New Mexico
Two-story home 🌲 Square footage: 3,100 🌲 Bedrooms: 3 Baths: 2.5

THE FULLY FINISHED BASEMENT OF THE MEADOW TAKES ADVANTAGE OF A LARGE CENTRAL FAMILY ROOM SPACE WITH EASY EXITS TO THE FIRE PIT AND THE NAMESAKE MEADOW BEYOND.



THE OPEN FLOORPLAN OF THE MEADOW ALLOWS EASY ACCESS TO ALL AREAS OF THE MAIN FLOOR, WHILE THE WRAPAROUND DECK AND LARGE WINDOWS PROVIDE BREATHTAKING VISTAS OF THE SURROUNDING HIGH COUNTRY OF NEW MEXICO.