

home of the month

Escape to White Mountain

why we love it

While Andy and Lisa Johnson's home brims with innovative touches (check out the great-room hearth, which houses both a fireplace and a flat-screen TV!), the real standouts here are the logs. The unique flared ends of the log walls captivate the eye on first approach, and the use of character-log beams and posts on the interior keeps the sense of awe going throughout the home.

the rest of the story...
loghomeliving.com

Tucked away in the mountains of Arizona, a family finds an oasis of tranquility hours away from the city.

story by Francesca Scalici | photography by Heidi Long

home of the month



HOT SPOT: The inviting great room houses a functioning fireplace, a flat-screen television and plenty of seating, making this the perfect spot for visitors. The ultra-wide fireplace anchors the room with eye-catching masonry (the stones were shipped to the site from Oklahoma) and a mantel made from reclaimed Canadian wood. The handcrafted columns and rafters add a sense of intimacy to a space that might otherwise seem imposing.

When Andy and Lisa Johnson began imagining a log home in the White Mountains of Arizona, they saw themselves moving after their two children finished college. But, admits Lisa, “We got too excited, so we ended up doing it a couple years earlier.” Before moving to their 4,260-square-foot mountain home, the Johnsons lived in Scottsdale, Arizona, a busy suburb of Phoenix. The family decided that the White Mountains, where they had often camped, hunted and fished, would be the perfect escape from the traffic, overcrowding and relentless pace of city life. The one downside, says Andy, was leaving their friends. Moving three and a half hours away put an end to spontaneous visits. But Andy has noticed that there’s a silver lining to that cloud. “When we do see our friends, it’s for a whole weekend, so we get to spend quality time with them.”

While their guests might make the trek primarily for the company, the mild temperatures, beautiful views and inviting accommodations are certainly a plus. Andy ensured comfort with built-in features like toasty radiant floor heating, while Lisa added depth and warmth with interior design choices. She used warm colors and cozy fabrics, adding charming touches with items she discovered in their travels—antique skis, sleds, fishing poles and even an armoire, all of which add a lived-in feel to their new home.

Though practicality is a ruling factor in the home’s design (such as the cleverly

home of the month



installed washer and dryer in the master closet), measured touches of luxury make it a relaxing retreat. A sunken hot tub outside the master bedroom provides a delightful spot to enjoy the stars on a summer night or the snow on a winter evening. The Johnsons' extravagant stone hearth houses both the fireplace and the television, a combination that seemed natural to Andy and Lisa, who love to watch sporting events by the comfort of the fire.

Customized details like these were easy to achieve since Andy, who has worked in construction his entire life, served as the general contractor. But while his watchful eye helped construction proceed smoothly, both he and Lisa are also quick to acknowledge that the good experience was due in large part to their log producer, Summit Handcrafted Log Homes. Before choosing a company, the Johnsons spent three weeks traveling across Canada, meeting with various producers. Summit was their last stop, and the couple knew right away that they had found their manu-

facturer. Initially, they were drawn to the unique look of the company's signature flared-end cedar logs, but their happiness with Summit continued to grow throughout the building experience.

"They gave me a price on the log package, and it never wavered a penny," reports Andy. "Plus, they delivered the logs on the date they promised." In fact, Andy and Lisa were so happy with Summit that Andy signed on to represent the company for the state of Arizona—and the beauty and comfort the couple has discovered in their log home serves as a ringing endorsement. 🏡



MIXED MEDIA (OPPOSITE, TOP): The charming kitchen displays Lisa's decorating savvy. Knotty cherry cabinets add warmth, while light log embellishments and dappled granite keep the darkness of the cabinets from overwhelming the space. The old-fashioned tin ceiling reflects the lighting, giving the space a friendly glow.

PIONEER ELEGANCE (OPPOSITE, BOTTOM): With its soft lighting and tin ceiling, the dining room mimics the homey glow of the kitchen. Like all the other double doors in the home, the set in the dining room features double screen doors behind the glass ones to let in warm breezes.

MASTER OF THE HOUSE (ABOVE, TOP): The Johnsons' main-floor master bedroom has gorgeous views of the property. The landscape is sometimes home to a few surprise guests, including a family of wild turkeys that camped out in the front yard for a few months. "We watched them grow up!" Andy says.

WOODED HIDEAWAY (ABOVE, BOTTOM): Andy and Lisa's daughter's room, which also doubles as their guest suite, has one of the more interesting architectural features in the home—two cubby beds tucked into the dead space under the sloping ceiling.

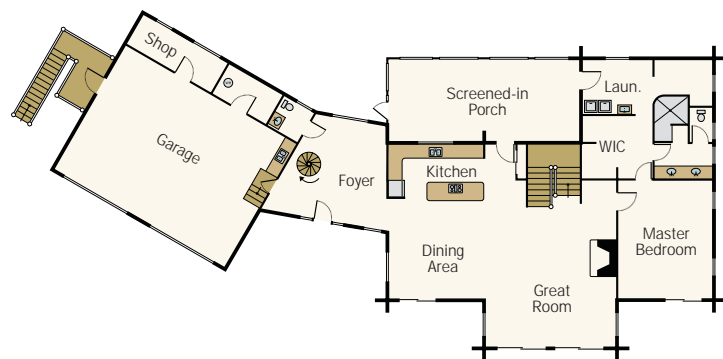
home of the month



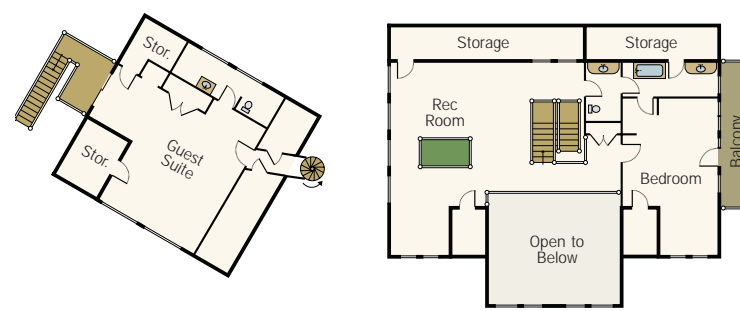
MATERIAL MATTERS (CLOCKWISE FROM TOP LEFT): Overlooking the great room, the game room provides an ideal catalyst for fun. Guests can play pool or shuffleboard while keeping tabs on the game on the hefty 52-inch television.

The bathroom in the guest suite brings in elements from other parts of the home—granite is repeated in the kitchen, and the slate on the walls echoes the flooring on the main level.

Andy designed and created the unorthodox pedestal sink in the powder room. Summit Handcrafted Log Homes provided the Western red cedar log, and Andy squared the back and hollowed out the center to run plumbing through it and make room for the granite bowl.



Main Level



Upper Level



LOG TALES: A few logs on the Johnsons' home sport carvings of critters, which were created at Summit's log yard in Canada. The animals are carved out of the log upon which they rest, adding a touch of whimsy to the exterior of the house.

home details

SQUARE FOOTAGE: 4,260

LOG COMPANY: SUMMIT
HANDCRAFTED LOG HOMES