

SPECIAL  
COLLECTOR'S EDITION

THE BEST

# LOG & TIMBER

HOMES OF THE YEAR

FROM THE EDITORS OF LOG HOME LIVING & TIMBER HOME LIVING

*The Readers'  
Choice Issue*

YOUR 10 FAVORITE  
HOUSES OF 2019

34  
SMART  
FLOOR  
PLANS

+25 WINNING  
SPACES  
*Room by Room*

Lakefront  
Living at  
its Best  
*(more inside)*

BARN-STYLE HOUSES • COZY LOG RANCHES  
GRAND TIMBER MANORS • STYLISH HYBRID HOMES



This summer retreat combines stone and log for that rustic yet refined look.



# COOL GETAWAY



**far left** A log stair case takes you to the second floor. From there, a spiral wrought-iron staircase transports you to the mirador, which is an ideal spot to take in a 360-degree view of the surrounding Lincoln National Forest.

**left** “Less log is more,” according to Summit CEO Robert Lockerby. “Additional elements, such as stone and even stucco, accent the logs.” This stone fireplace with its iron gate makes for a sturdy yet comfortable setting.

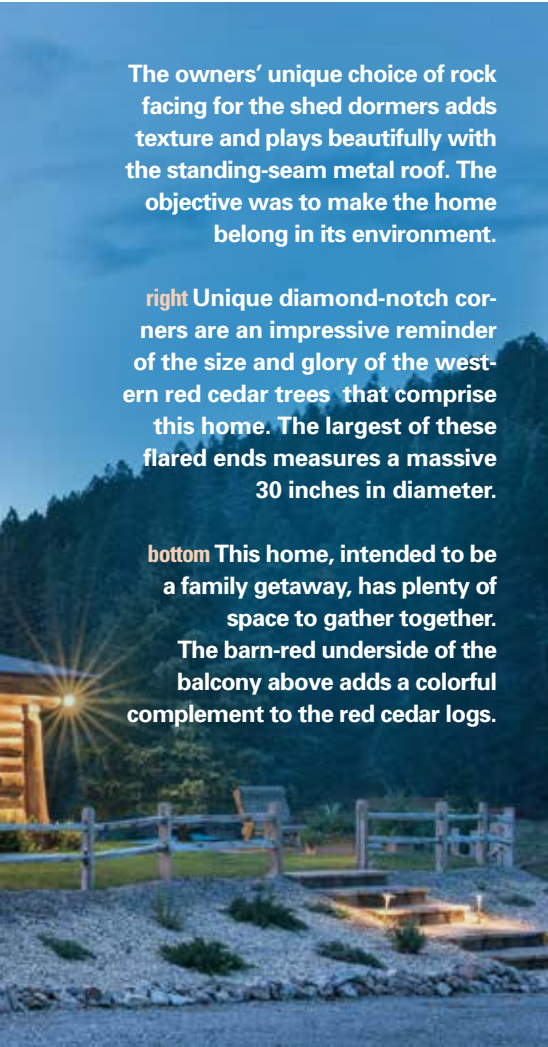
photos courtesy of **SUMMIT LOG & TIMBER HOMES**



The owners' unique choice of rock facing for the shed dormers adds texture and plays beautifully with the standing-seam metal roof. The objective was to make the home belong in its environment.

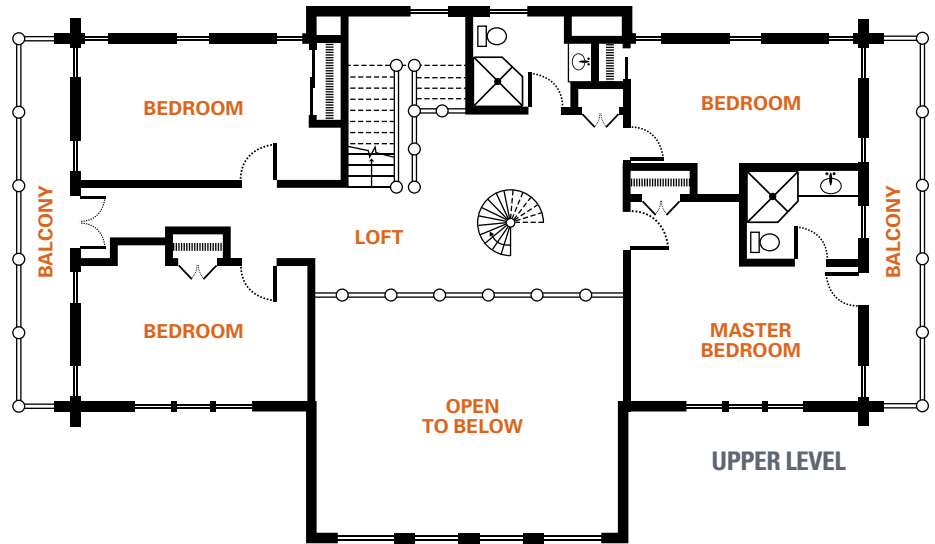
**right** Unique diamond-notch corners are an impressive reminder of the size and glory of the western red cedar trees that comprise this home. The largest of these flared ends measures a massive 30 inches in diameter.

**bottom** This home, intended to be a family getaway, has plenty of space to gather together. The barn-red underside of the balcony above adds a colorful complement to the red cedar logs.

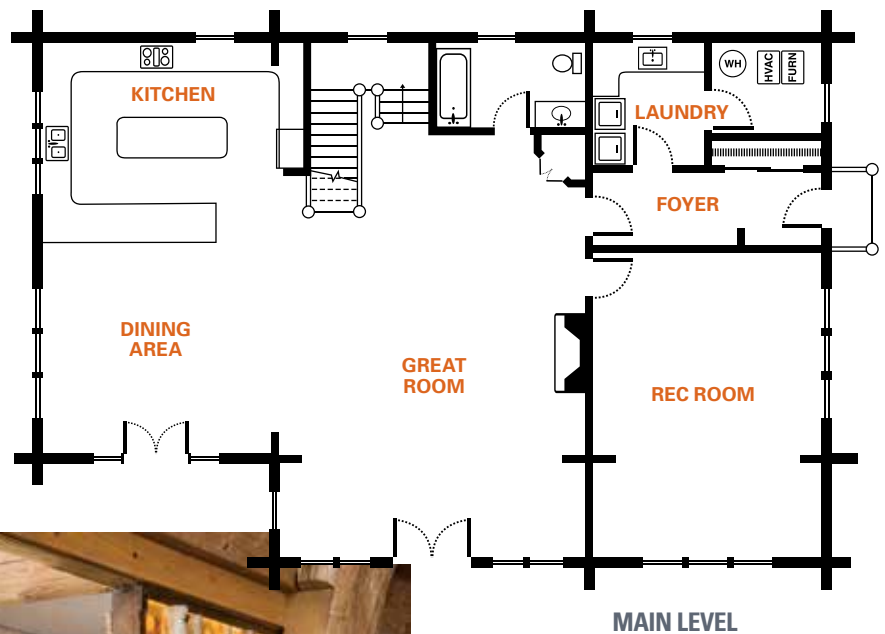




**E**very summer, the owners of this 3,950-square-foot home escape the heat of their native El Paso, Texas, by traveling over the border and through the woods to Cloudcroft, New Mexico. The destination? Their red cedar retreat from the rat race. The massive logs have an average diameter of 16 inches and, thanks to diamond-notch corners with staggered ends, many have flared ends ranging from 24 to 30 inches. The result is one impressive log cabin. ■



**SQUARE FOOTAGE** 3,950  
**BEDROOMS** 4  
**BATHROOMS** 3 FULL  
**LOG PROVIDER** SUMMIT LOG & TIMBER HOMES



**left** The rock facing on the kitchen island ties in nicely with the rock work on the exterior of the home and around the perimeter of the foundation. Aspen logs on a bed of their own leaves makes for a creative take on classic sliding doors.

**MORE ONLINE**  
 For the full story, more photos, and to vote for your favorite log or timber home, go to [loghome.com/best-log-timber-homes-contest-2019](http://loghome.com/best-log-timber-homes-contest-2019)